

A &
D S

a b
+ c

Capability
Scotland

Our Inclusive Community Project

Design Feedback Workshop 1: Residential Services

Workshop Facilitator

Steve Malone

Architecture and Design Scotland

June 26th 2024

A &
D S

a b
+ c

Capability
Scotland

Project Update

Caroline Dearden

Anderson Bell + Christie

There's been quite a collaborative process with staff and customers over the past 18 months to develop the proposals; working closely to interrogate plans and ideas and testing them.

We've now got a full design team so that engineers, quantity surveyors, fire engineers, planning consultants and landscape architects are contributing which has allowed us to do due diligence on the site in terms of site investigations and technical strategy. This has informed the proposals as well as the aspirations of the staff and people supported at Upper Springland.

We have consulted with Perth and Kinross planning department and they've been really positive and supportive with outline proposals.

We feel it's important to share plans now with staff, day attenders, residents and their families to refine the proposals with the feedback received.



To the high street is the Community Hub. This has been an anchor of our master plan in terms of the front door and interface with the wider Bertha Park community. Sitting behind that are the three services. Each service has 20 units.



1 Priorities for Customers and Family

Objective The experiences any development must enable	Benchmark The criteria to be met and/or some views of what success might look like
<p>1.1 Connections / Site Layout Development should be well-connected to the surrounding area. Getting to and from the care home must be easy and reliable, safe and pleasant during the daylight and darkness.</p>	<ul style="list-style-type: none"> The development should be accessible by public transport and walking, and by car. It should have good public transport and road links and be clearly signposted on approach. Appropriate transport links to the town and appropriate location of nearby bus stops (CS should work with the local authority to help enable this) Designated staff & visitor parking to be provided, with spaces and drop off points located near the main entrance(s) and covered seating areas to provide shelter. Include provision for electric vehicle and e-bike charging points. Pedestrian routes and parking to have good lighting and visibility during hours of darkness to provide a safe environment for customers and family accessing/leaving the building and to be sheltered from the wind by use of building or landscape planting/features. Include for mobility Provide safe and accessible paths to nearby trails/woodland parks and links to the town and nearby shops Where possible space to be provided for future expansion over time
<p>1.2 First Impressions</p>	<ul style="list-style-type: none"> There should be a main entrance into the development that is easy to find.



(left) Homely feel, domestic scale of building (right) universal shared open space

Our Inclusive Community Project

08/02/2023

	<p>Flexible/multi-use space with ability to corner-off sections for different activities but still able to observe; scope for chats, meeting people, café; natural light and views,</p>
<p>1.7 Shared Spaces (Outdoor) People can go outside independently because gardens areas are safe, accessible, well-kept and welcoming, with options to get involved with gardening or other leisure pursuits.</p> <ul style="list-style-type: none"> A range of types of outdoor spaces provided – from sheltered and secure courtyards, through shared gardens, to a limited area of public realm which can be shared with local people Consider having clear activities and spaces within the outdoor areas that provide spaces for socialising and activities, with routes that are weather-proof as far as possible and greater accessibility to gardening activities. 	<ul style="list-style-type: none"> Accessible park areas/nature walks with plants/trees/views to the river. Parasols/covered areas close to the building to provide shelter from sun or rain, with seating and tables for outdoor activities such as art, music, drama etc. External space that provides scope for outdoor gathering/socialising/parties, creative festival space, tents etc. Sensory gardens that are fully accessible (avoid gravel/bark paths) and stimulating to move through – smell, touch, colours, mirrors, activity etc. Externally accessed toilets / changing places. Raised flower beds/gardens for residents to fill/look after. Include covered external / smoking areas for customers and family who wish to use them. Outdoor wheelchair activities, eg. accessible swings, roundabouts. Soft planted organic edges/hedges or fences (not walls) with clear boundaries a range of planting heights to allow shared and more private areas. Consider a greenhouse/sun lounge for customers and families. Some opportunity for views of the village/High Street.



Our Inclusive Community Project

08/02/2023

Capability Scotland

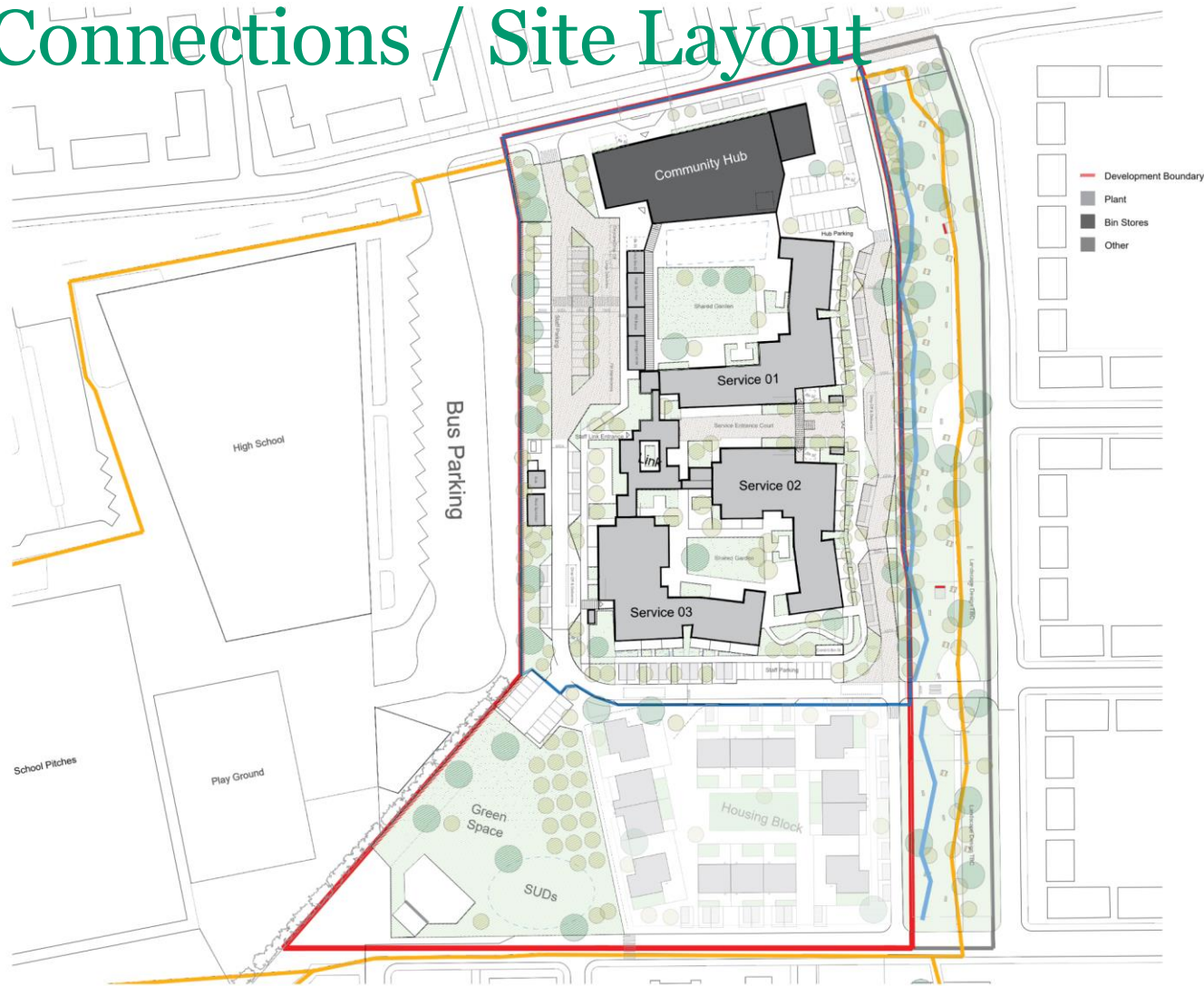
The Design Statement was prepared following a series of user-focused workshops and consultation work with staff, the people supported at Upper Springland and families. It is used as a visual reference guide by architects AB+C and the design team to outline key preferences in the development.

1.0 Connections / Site Layout

Development should be well-connected to the surrounding area. Getting to and from the care home must be easy and reliable, safe and pleasant during the daylight and darkness.

The layout of the site must provide safe and reliable access for staff in daylight and darkness in a manner that supports green travel where possible

1.0 Connections / Site Layout



The orientation of the building forms private courtyard areas meaning there is immediate access to private spaces for activities. The site is surrounded by landscape. We have Linear Park running North to South on the East side of the site, creating a natural buffer from housing to the east. Similarly to the West we're going to have a landscape area and service zone which gives a natural buffer to the school.

2.0 First Impressions

The initial impression of the development should be one that is welcoming and homely, light and open, accessible and inclusive.

It should have a clear entrance, not feel 'out of place' in its setting and be familiar and comfortable for customers - an integrated part of the community.

2.0 First Impressions



Artist's impression; view East side of the development.

2.0 First Impressions



Artist's impression; captures the East side of the development featuring the access point.



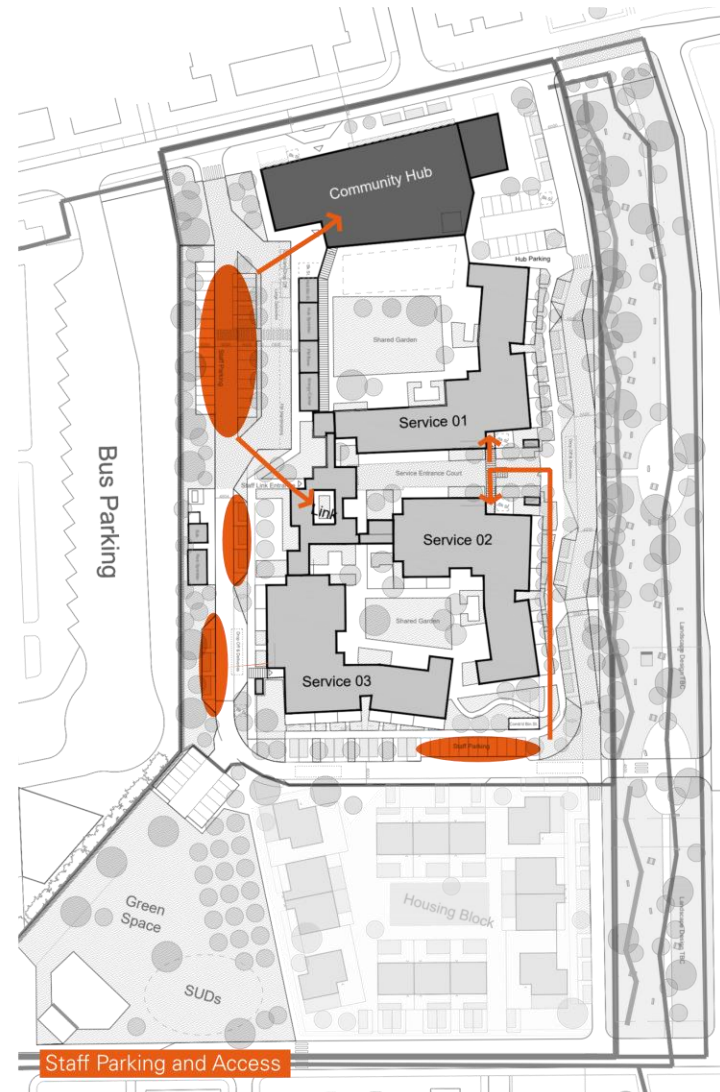
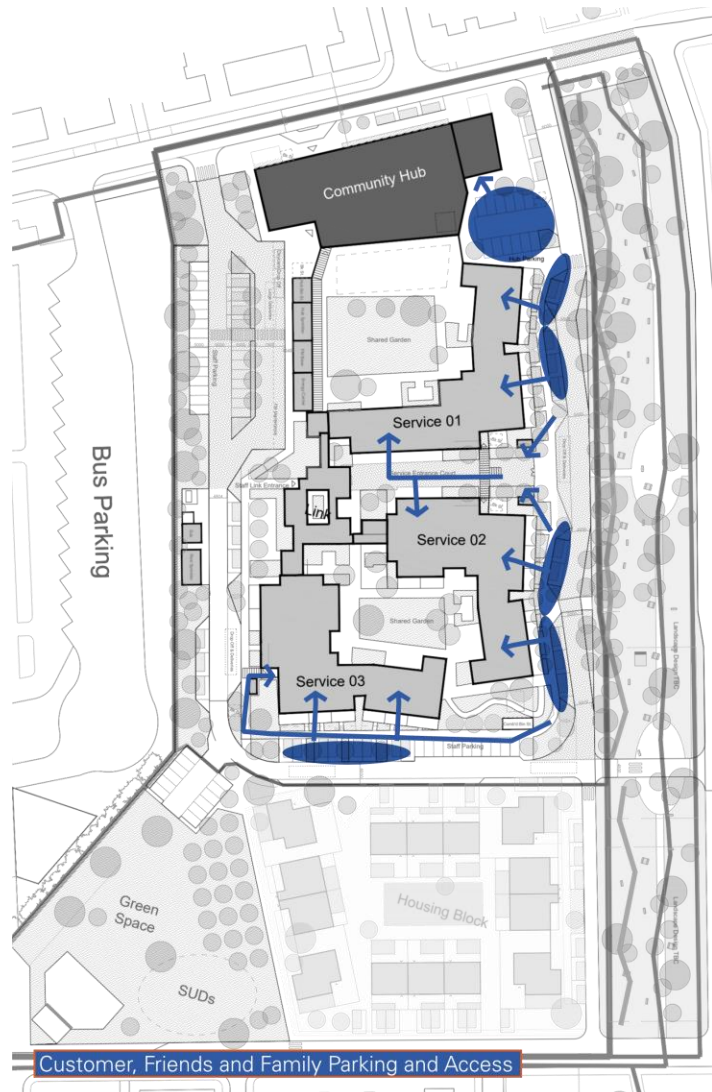
Artist's impression; captures the bottom of the development.

3.0 On Arrival

Arrival / reception must be accessible and welcoming. A secured space that is open all hours – balancing security needs and ease of access. It should be a pleasant place providing:

- *opportunities for social interaction and support, and areas of a more private nature;*
- *facilities (toilet, cafe, support spaces)*
- *clear connection to staff for assistance.*

3.0 On Arrival



Areas marked in blue highlight access and potential parking for Customer, Friends and Family.
Areas marked in red highlight access and potential parking for Staff.

4.0 Moving Around

People benefit from a setting which is designed so that everyone can independently access all parts of the premises they use, including outdoor space.

Those with a physical, sensory, mental health, dementia or other cognitive impairments are supported through the provision of aids and signage where appropriate. The designs should reduce any perceived anxiety around ramps and way finding around building.

4.0 Moving Around



5.0 Living Spaces (Studios)

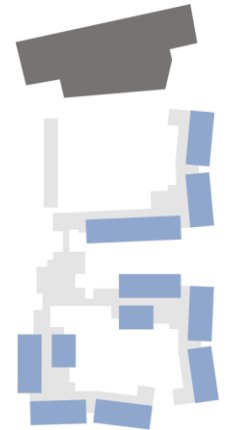
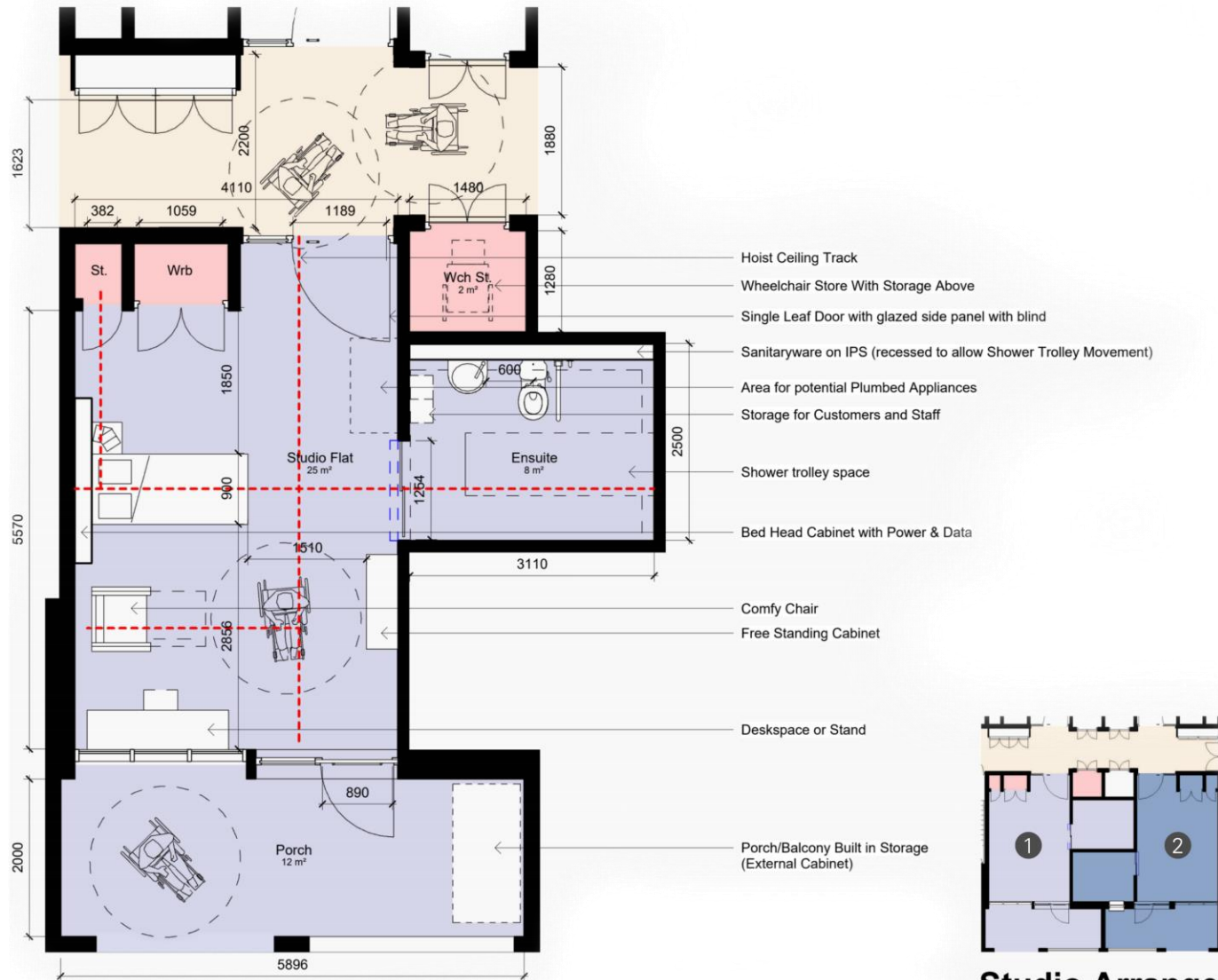
A home environment that supports people who need a significant level of care to live as independently as possible – to be able to pursue their own interests, set their own agenda for the day ahead, and be as sociable as they would like - while getting the help they need.

The ability for customers to personalise their living spaces is essential.

5.0 Living Spaces (Studios)



5.0 Living Spaces (Studios)



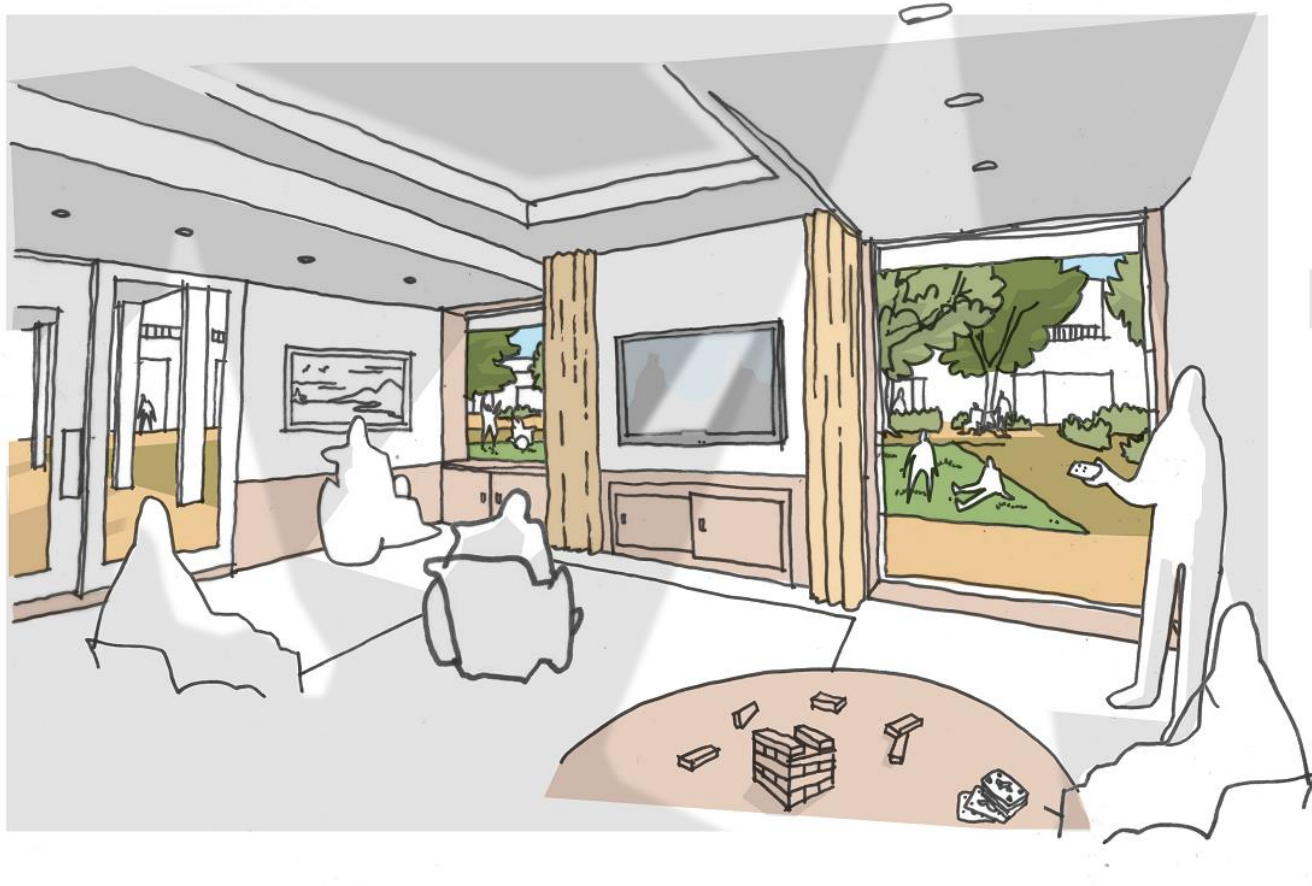
Studio Arrangement
1 : 200

6.0 Shared Indoor Spaces

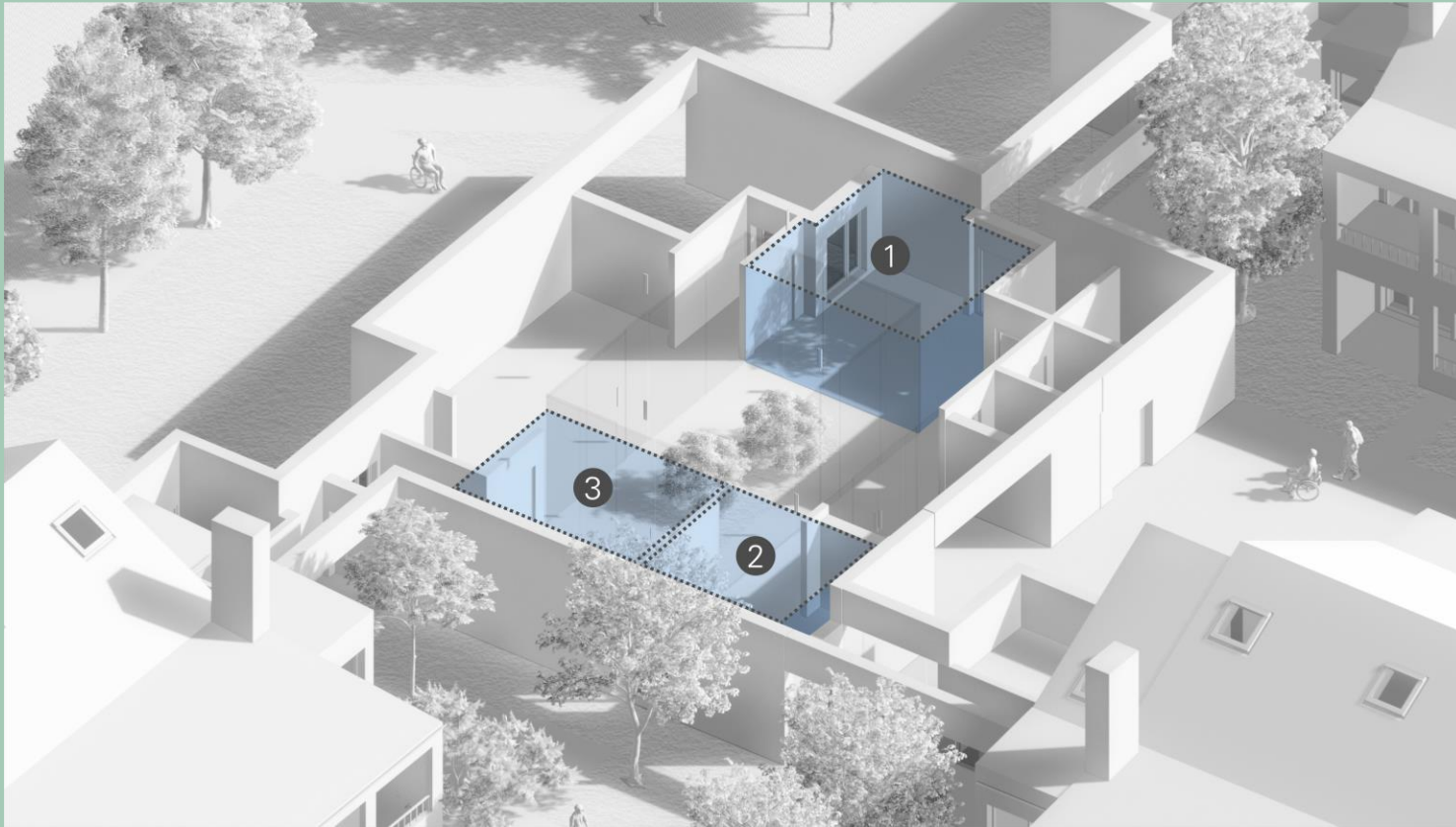
People can choose to use private and communal areas and have the right to privacy when they want.

It is important that communal areas vary in nature – with provision for people who wish to find quiet, calm spaces and for people who wish to congregate in greater numbers in more formal and informal ways.

6.0 Shared Indoor Spaces



6.0 Shared Indoor Spaces



A Link building offers shared communal spaces.

7.0 Shared Outdoor Spaces

People can go outside independently because gardens areas are safe, accessible, well-kept and welcoming, with options to get involved with gardening or other leisure pursuits.

8.0 Support Spaces

People are routinely supported to access facilities within and outwith the care home. There is an enabling environment created that provides people support and opportunities to extend their horizons.

The location and the culture of the care home should support the inclusion of family and friends.

8.0 Support Spaces



Architecture & Design Scotland

Ailtearachd is Dealbhadh na h-Alba

Find out more about us:

www.ads.org.uk

@ArcDesSco

T: 0131 556 6699

E: info@ads.org.uk

Bakehouse Close

146 Canongate

Edinburgh EH8 8DD

Thank you!